

Road Bridge Main Steel Structure

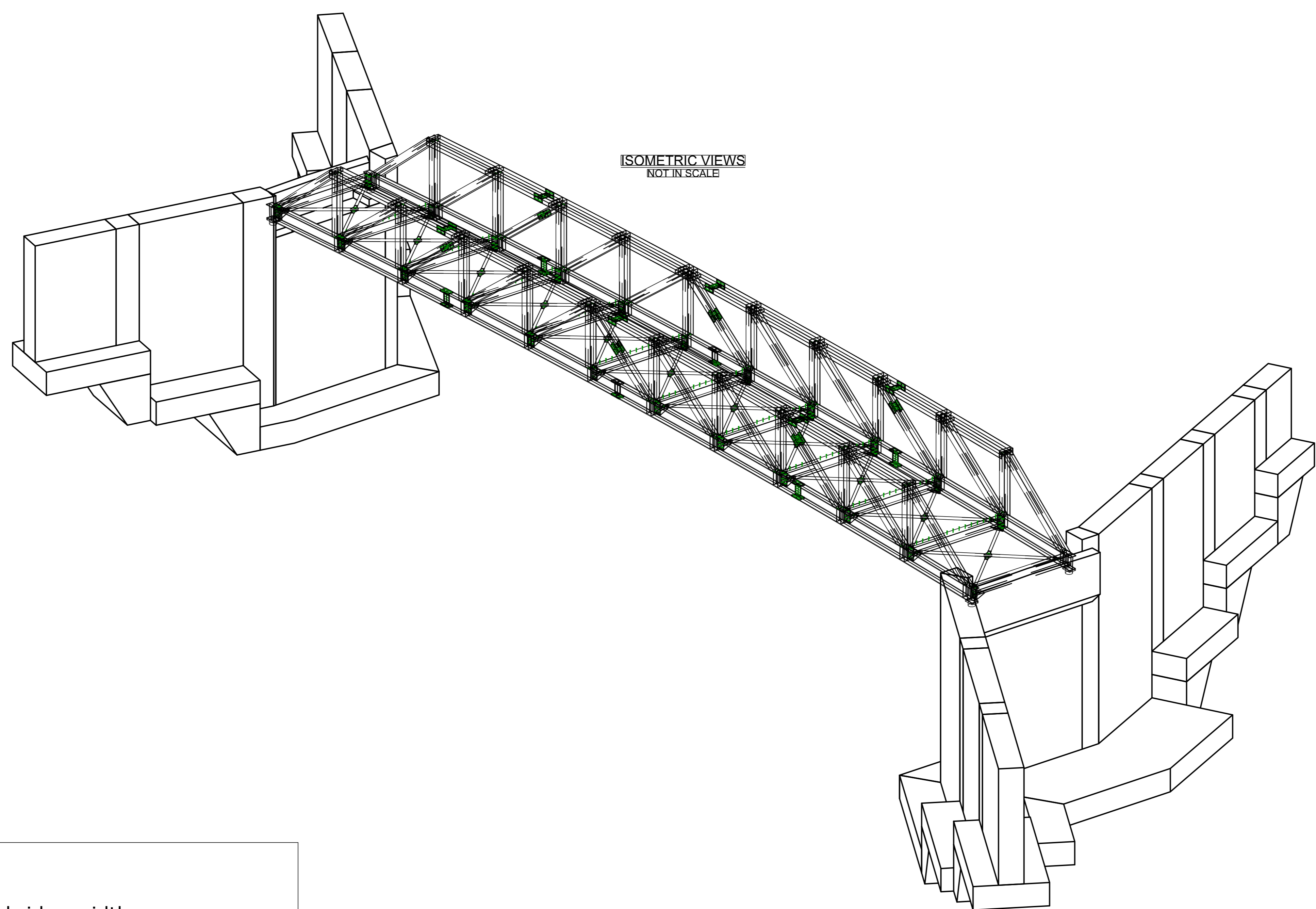
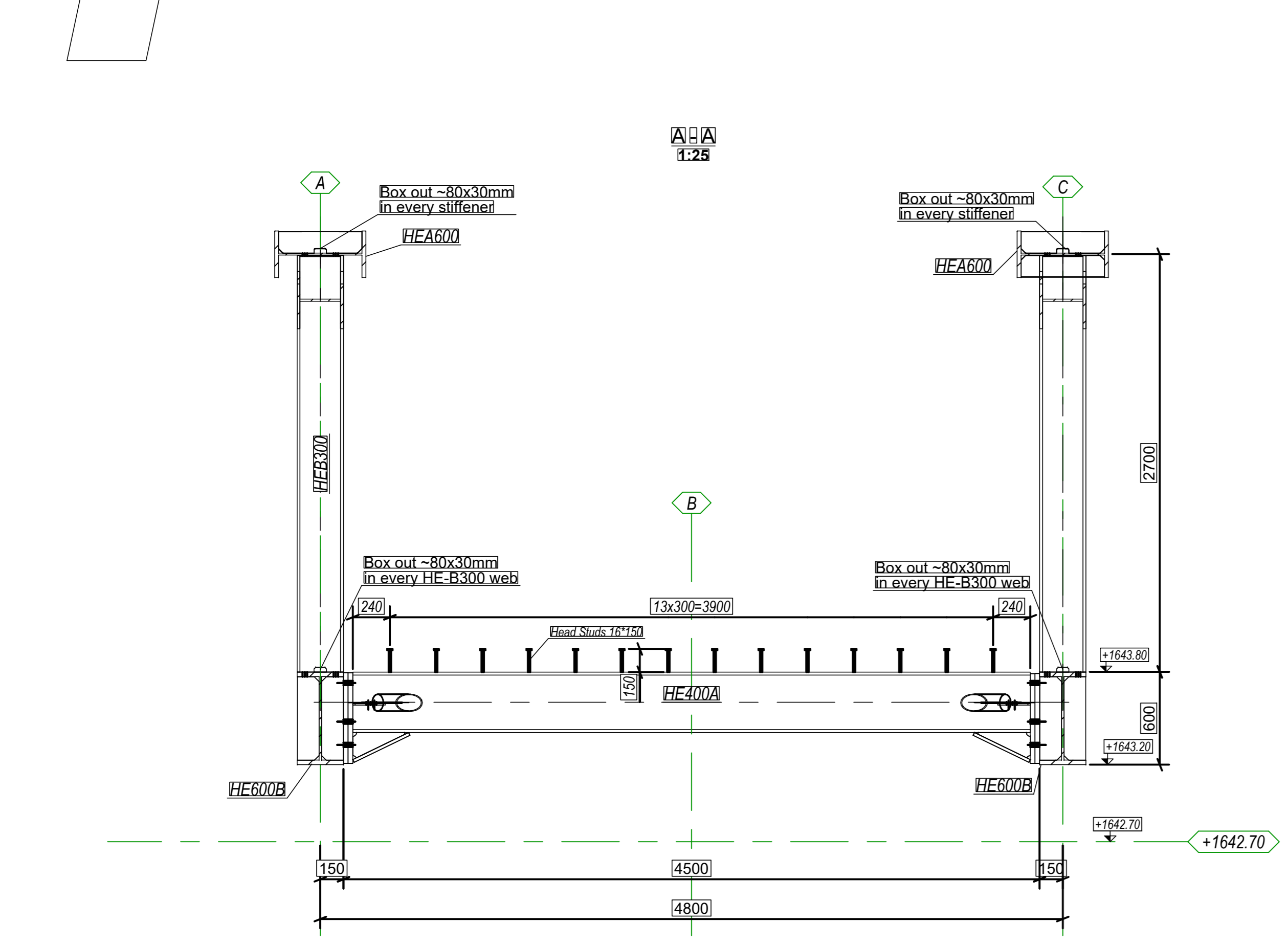
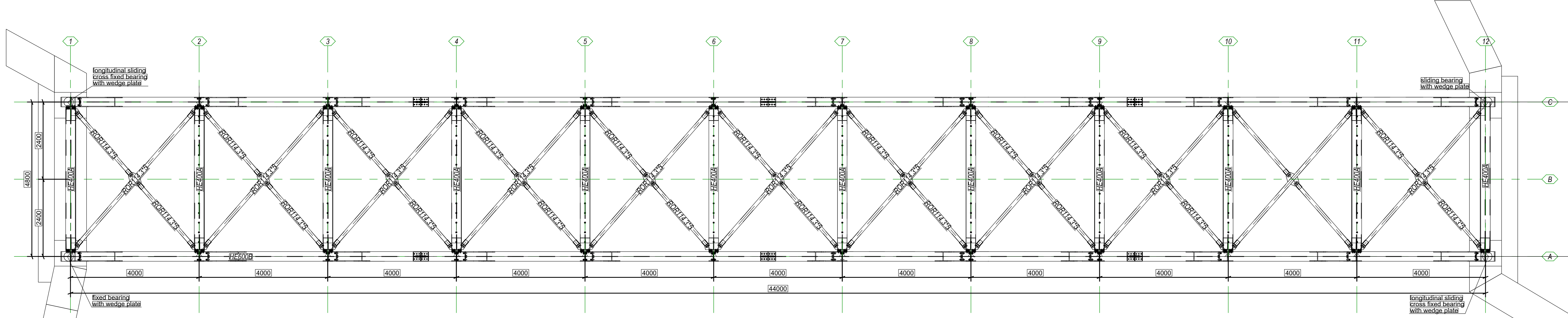
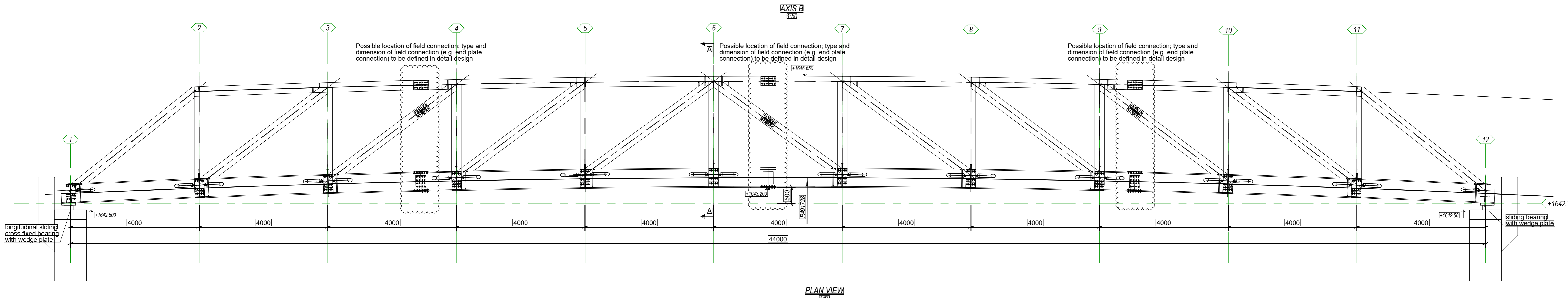
REFERENCE DRAWINGS	
DRAWING NO. ნახაზის ნომერი	TITLE სახელის სივრცე
K06-20-0001 - 0005	Foundations for Road Bridge - Formwork Drawings
K06-20-0006	Road Bridge Top Slab - Formwork Drawing
K08-00-0001	General Notes for Steelwork

NOTES : შენიშვნა :

- ALL DIMENSIONS ARE IN MILLIMETRES UNLESS NOTED OTHERWISE.
"საშუალო მანძილი მითითებულია მმ-ით, თუ სხვაგვარად არ არის აღნიშნული"
- ALL LEVELS ARE IN METRES AND RELATE TO SEA LEVEL.
- ALL DIMENSIONS ARE TO FACE OF CONCRETE, MASONRY (WITHOUT PLASTERING) OR FINISHED FACE OF STUD PARTITION.

All steel to be grade S355 J2 unless noted otherwise.
Execution class to be EXC3 according EN 1090.
Corrosion protection to be foreseen acc. K08-00-0001.
Take exact Dimensions of Structures before manufacturing.

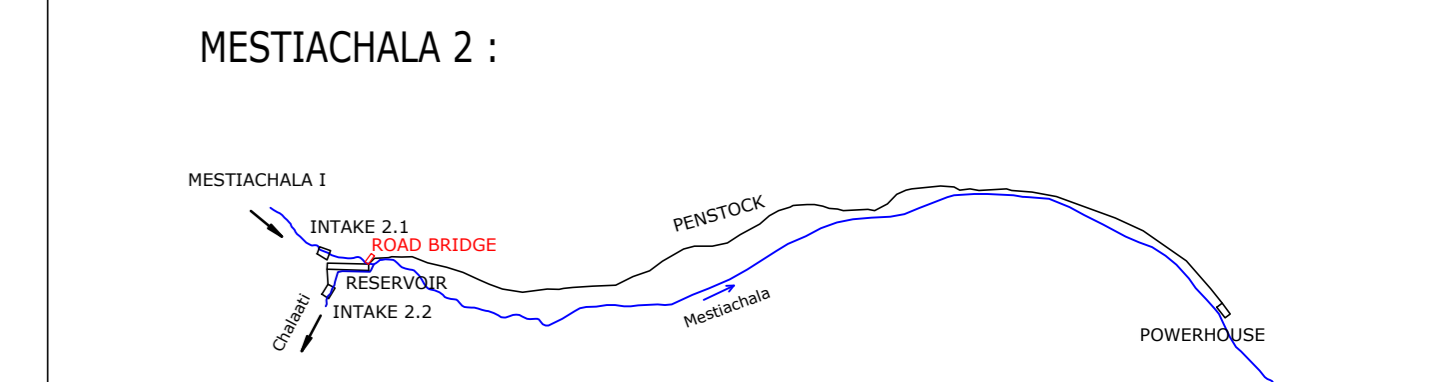
Note:
All displayed joints and details are just schematic / minimum and have to be designed in detailed shop design.



Note for maximum load:
The steel structure is designed for a maximum traffic load:
One single lorry with max. 60 tons (SLW 60 acc. DIN1072) going just in middle of the bridge width.
One single lorry with max. 30 tons (SLW 30 acc. DIN1072) + additional 5kN/m² other live load over whole length.

STEELWORK GUIDE DRAWING

KEY PLAN: მდინარის კვეთის რეკონსტრუქციის გეგმა
not in scale



REV.	DESCRIPTION	DATE	BY	CHECKED
03	-	-	-	-
02	-	-	-	-
01	Execution class added - Ready for Construction	20.01.2020	Heinz	Uzunoglu
00	Ready for Construction	14.01.2020	Heinz	Uzunoglu

CLIENT: JSC SVANETI HYDRO

PROJECT: HPP Mestiachala 1 & 2
Detail Design

DESIGN: 14.01.2020

DRAWING NO.: 16056

SCALE: 1:25/50

REV.	DESCRIPTION	DATE	BY	CHECKED
03	-	-	-	-
02	-	-	-	-
01	Execution class added - Ready for Construction	20.01.2020	Heinz	Uzunoglu
00	Ready for Construction	14.01.2020	Heinz	Uzunoglu